

# BEAMTEK

## DLF 200e/300e Fiber Laser Marking Machine

This series is our economical fiber laser marking machine, stable performance and lower cost. This laser is using intelligent vector control algorithm, marking speed is greatly improved. The laser is a compact size, lower maintenance, no consumables coding system and it provides high quality coding. With optimized marking font library, this laser can be commonly used in food, cosmetics and other industries to print high contrast and permanently message&logo on hard plastic (PE/PP), flexible packaging materials, metal and other materials to ensure the traceability of products. The identification of fiber laser will be clearer than CO2 laser marking on the non-metal applications.



### High Stability

- New intelligent control algorithm for high quality marking effect.
- Enhanced anti-electromagnetic interference design to ensure the stable running in a harsh environment.
- 24 hours continuous working.



### Easy Integration

- Compact independent design, can be better integrated into the existing production line.
- Small size, can adapt to a variety of installation space.
- Innovative interactive way is easy to learn&understand, more convenient and fast operation.
- Multiple interfaces can connect and interact to other machines and smoke extractor.



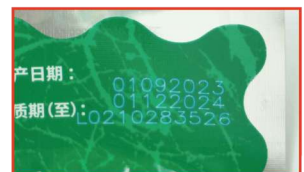
### High Efficiency

- Faster marking speed, up to 1000 pcs per second.
- Almost unlimited font, graphics and bar code applications



### Cost Effective

- High efficiency air cooling design to achieve low maintenance and long lifetime.
- MTBF is up to 100,000 hours.
- No consumable, saving the use cost.
- Permanent identification, reliable anti-counterfeiting string selection.



**Contech Supply Co.,Ltd.**

☎ 02-170-8051

✉ [contech@contechsupply.co.th](mailto:contech@contechsupply.co.th)

🌐 [www.contechsupply.co.th](http://www.contechsupply.co.th)

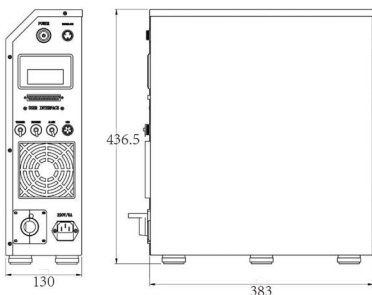


@contechsupply

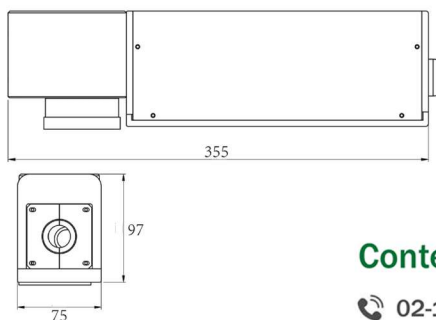
## Specification:

	DLF200e	DLF300e
Applications:	Soft packaging film, PP, metal, etc.	
Marking Method:	XY axis scanning simultaneously	
Marking Mode	Flying Mark	150m/minute
	Staric Mark	200m/minte
Marking Laser	Multiple products can be marked simultaneously	
	Type	Filber Laser
	Wavelength	1064 nm
Output	20 W	30 W
Guiding Laser	red light guiding	
Marking area/distance (mm)	70×70/107, 110×110/187, 150×150/245, 175×175/272, 200×200/324, 250×250/414, 300×300/465	
Scanning Speed	≤8000 mm/s	
Software controller	Linux system, 10 inch touch screen	
Character Type	Fonts	JSF, True Type, DMF
	Bar code	Code39/Code25/EAN-13/Code128 etc
	QR code	PDF147/QRCODE/DATAMATRIX
	Image	DXF/PLT vector diagram input/output
Marking Status	running, ready, fault status	
Character Size	0.1 mm-Maximum marking area	
Input/output	2 way input/3 way output, customizable	
Interface	SD card interdace/USB2.0/communication interface	
Laser Installation Direction	any direction	
Cooling Way	Air cooling	
Power Supply	50-60Hz; 220V, optional 110V	
Power Consumption	200 W	300 W
Working Temperature	0-40 °C	
Working Humidity	10 % ~ 90 % no condensation	
IP Rating	IP54	
Dimension	Controller: 383 mm×130 mm×437 mm, Laser: 355 mm×75 mm×97 mm	

### Dimension (mm)



Controller



Laser



**Contech Supply Co.,Ltd.**

☎ 02-170-8051

✉ [contech@contechsupply.co.th](mailto:contech@contechsupply.co.th)

🌐 [www.contechsupply.co.th](http://www.contechsupply.co.th)



@contechsupply